

# ForeSight™

## Long Range Video Surveillance

***Around-the-clock monitoring - day or night.***

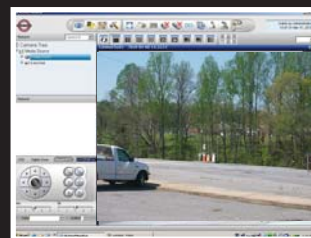
ForeSight™ Long Range Video cameras provide extreme long range day/night surveillance anywhere it is needed. These powerful cameras can identify a person between ranges of 600m to 7.7km and read license plates between 200m and 1000m. Ideal for construction sites, commercial facilities, stadiums, government facilities, critical national infrastructures, and military establishments.

ForeSight™ high speed PTZ cameras provide day/night viewing, variable zoom, auto-focus, auto-iris, continuous 360° pan and 180° tilt range. Illumination options include IR, laser IR and thermal imaging. The thermal Hawk Eye can detect a temperature difference less than or equal to 85mK and is able to generate well-defined images in full darkness, haze and smog. The 5 Megapixel Eagle Eye camera incorporates an infrared laser illuminator with a range of up to 1000m. Weatherproof camera housings are equipped to handle extreme environmental conditions.

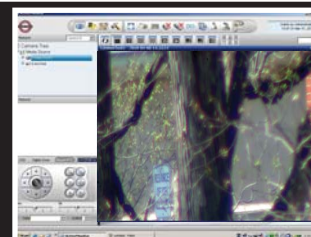
Up to 32 cameras can be monitored simultaneously from a central reviewing station. Once the video footage is transmitted via the internet, the data can be recorded, stored, or saved as JPG files. Portable ForeSight™ cameras easily store into a waterproof, compact Pelican™ case for quick relocation.



- >> **Portable or fixed mount**
- >> **Robust protection of critical parts**
- >> **Outstanding image quality**



- >> **Footage transmitted via Internet**
- >> **Detect, identify and recognize**



# ForeSight™ Specifications

## Falcon Eye TPC110

Image Sensor	1/4" Exview Had Ccd
Active Pixels	752x582
Video Output	Ntsc
Shutter Speed	1/1-1/10000
Minimum Illumination	.01 Lux
Focal Length	3.4 - 122.4
Illumination	100m IR Illuminator

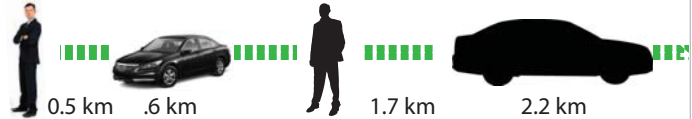
Zoom  
Features

Optical 36x
Digital 12x
Total 432x
Auto Focus
Auto Exposure
Multi Protocol
Auto D/N

Pan Speed	100°/s
Tilt Speed	60°/s
Pan Range	360° Continuous
Tilt Range	-90° + 90°
Power	50w
Power Supply	12vdc
Temperature Range	-35 C to 55 C



90 m



## Raptor Eye TPC210

Image Sensor	1/2.8" CMOS
Active Pixels	1920x1080: 2 MP
Video Output	HD 1080p, SD NTSC
Shutter Speed	1/1-1/10000
Minimum Illumination	.3 Lux
Focal Length	4.7-94 mm
Illumination	300m Laser IR Illuminator

Zoom  
Features

Optical 20x
Digital 12x
Total 240x
Auto Focus
Auto Exposure
Multi Protocol
Auto D/N

Pan Speed	100°/s
Tilt Speed	60°/s
Pan Range	360° Continuous
Tilt Range	-90° + 90°
Power	50w
Power Supply	12vdc
Temperature Range	-35 C to 55 C



100 m



## Hawk Eye TPC310

Image Sensor	Day	1/4" Exview Had Ccd
	Thermal	Vox Microbolometer
Active Pixels		752x582(D) 320x240 (N)
Video Output	Day	NTSC
	Thermal	NTSC
Shutter Speed		1/1-1/10000
Minimum Illumination		.01 Lux
Focal Length		3.4 - 122.4; 50mm

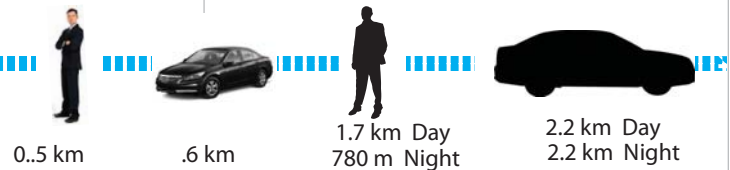
Zoom  
Features

Optical 36x
Digital 12x
Total 432x
Auto Focus
Auto Exposure
Multi Protocol
Auto D/N

Pan Speed	100°/s
Tilt Speed	60°/s
Pan Range	360° Continuous
Tilt Range	-90° + 90°
Power	50w
Power Supply	12vdc
Temperature Range	-35 C to 55 C



90 m



## Eagle Eye TPC1000

Image Sensor	RGB CMOS, D/N
Active Pixels	5mp
Video Output	I/P, NTXC
Shutter Speed	1/1-1/10000
Minimum Illumination	.01 Lux
Focal Length	30-600mm

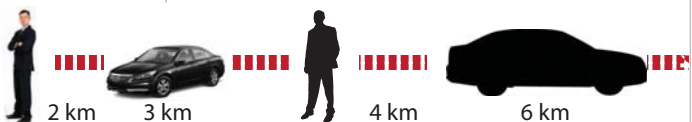
Zoom  
Features

Optical 20x
Auto Focus
Auto Exposure
Multi Protocol
Auto D/N

Pan Speed	100°/s
Tilt Speed	60°/s
Pan Range	360° Continuous
Tilt Range	-90° + 90°
Power	50w
Power Supply	12vdc
Temperature Range	-35 C to 55 C



762 m



### TRAINING

Operational and Hardware training manuals available on-screen at all times  
—On-site training available

### WARRANTY

One Year Manufacturer's Warranty Included

