

FastPlate™ Fixed ALPR

Automatic License Plate Recognition

Accurately capture, read, and analyze!

FastPlate™ Fixed Automatic License Plate Recognition System (ALPR) accurately captures and processes license plate information on moving vehicles. Automatic License Plate Recognition (ALPR) technology “reads” individual vehicle plates using optical character recognition (OCR) which is the camera’s ability to scan the license plate images for letters and numbers, and then translate those images into usable data. The ALPR system runs continuously and captures license plates in nearly every lighting condition.

FastPlate™ Fixed ALPR gives security and law enforcement officials an efficient method of monitoring, documenting, comparing, and storing captured vehicle information. Users are presented with on-screen vehicle information including registered drivers, stored master video/images, and alerts if the vehicle is registered on a “be on look out” (BOLO) list or stolen vehicle database. The FastPlate™ system features detailed reporting capabilities that allow security staff to customize reporting based on immediate needs.

The FastPlate™ Fixed ALPR can be configured to manage multiple entrance/exit access points using various cameras, therefore the system is tailored to fit any functional need or specific location requirements.



- >> “Read” & analyze plates
- >> Compare findings to BOLO list or stolen vehicle databases



- >> Works in nearly all lighting
- >> On-Screen alerts
- >> ALPR great for access gates



CAMERA

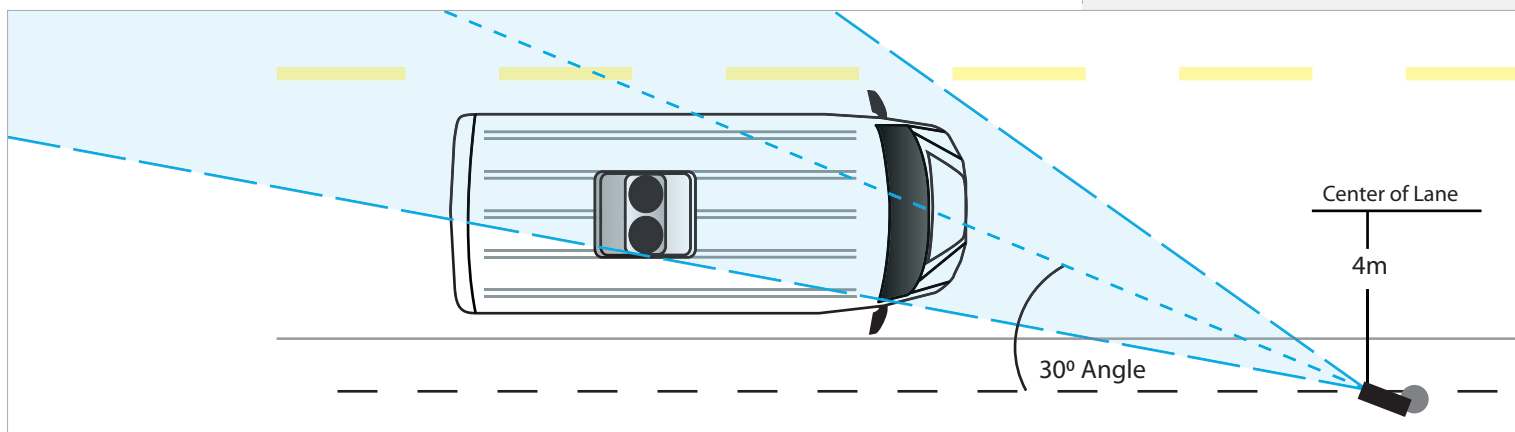
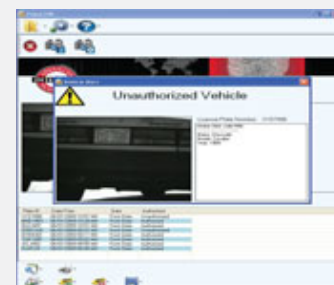
Camera Type	IP
Camera Sensor	B&W or Color
Resolution	1280 x 760
Lens	3-12mm
Illumination	IR, 850nm
Shutter	1/100-1/30000
Power	17-48 W
AC Input	100-240ACV, 50Hz w/ Adaptor
DC Input	12 VDC
Output	MPEG4, H.264
Output Connector	RJ45, 1000 Ethernet
Temperature Range	-10C to 50C



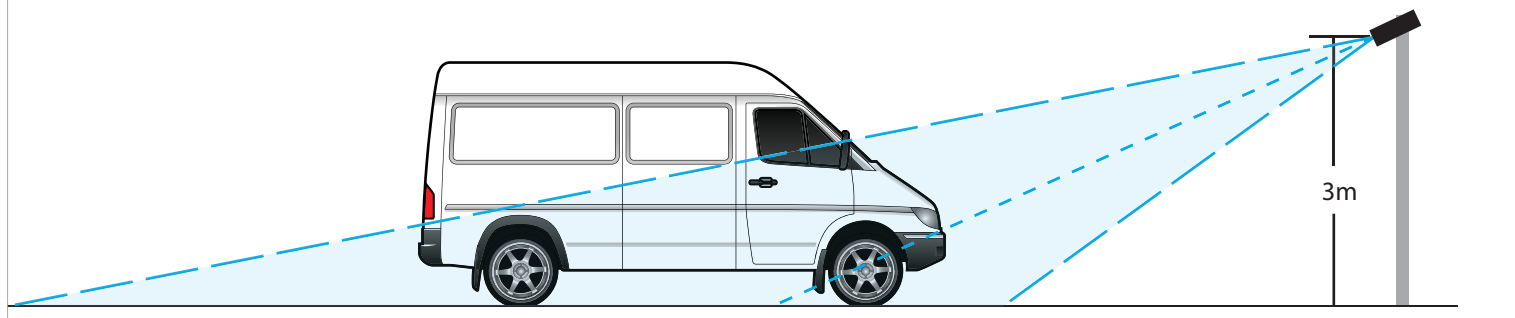
SOFTWARE

The FastPlate™ System receives images from one to four license plate recognition cameras and each frame is passed to the recognition engine for analysis. The software statistically “reads” from the images to produce a 98% probability of returning the correct license plate number. If a “do not enter” vehicle’s plate is read, a visual warning is presented on-screen.

If optional scene cameras are used, the software stores the license plate number and images of the vehicle to the SQL database. The system can also include an I/O module to open/close gates, or turn on/off stoplights. The FastGate™ system can be used in a multi-gate application with a central server managing the master database containing records from all gates monitoring inbound and outbound traffic from each.



INSTALLATION



TRAINING

Operational and Hardware training manuals available on-screen at all times
—On-site Training Available

WARRANTY

One Year Manufacturer’s Warranty Included with All LowCam™ systems.

