

FastPlate™ HandHeld ALPR

Automatic License Plate Recognition

Accurately capture, read, and analyze.

FastPlate™ HandHeld Automatic License Plate Recognition System (ALPR) accurately captures and processes license plate information on moving and parked vehicles. Automatic License Plate Recognition (ALPR) technology "reads" individual vehicle plates using optical character recognition (OCR) which is the camera's ability to scan the license plate image for letters and numbers, and then translate those images into usable data. The ALPR system runs continuously and captures license plates in nearly every lighting condition.

FastPlate™ HandHeld ALPR gives authorized personnel an efficient method of monitoring, documenting, comparing, and storing captured vehicle information. Users are presented with on-screen vehicle information on a light-weight handheld computer. Information displayed includes license plate numbers/characters, stored master images, and alerts if the vehicle is registered on a "be on lookout"/BOLO list or stolen vehicle database.* The FastPlate™ system features detailed reporting capabilities built on a SQL Server Database platform that allows security staff the ability to customize reporting based on immediate needs.

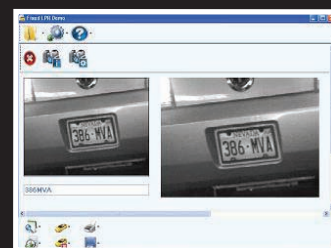
The FastPlate™ HandHeld ALPR is truly portable and easily transports in a ruggedized Pelican™ case. FastPlate™ helps reduce human errors and delivers reliable electronic capturing of license plate information. FastPlate™ HandHeld ALPR addresses the needs of parking, law enforcement, and facilities management.



- > > "Read" and analyze plates
- > > Compare findings to BOLO list or stolen vehicle databases



- > > Works in nearly all lighting
- > > Compact and transportable
- > > On-Screen alerts



ALPR

